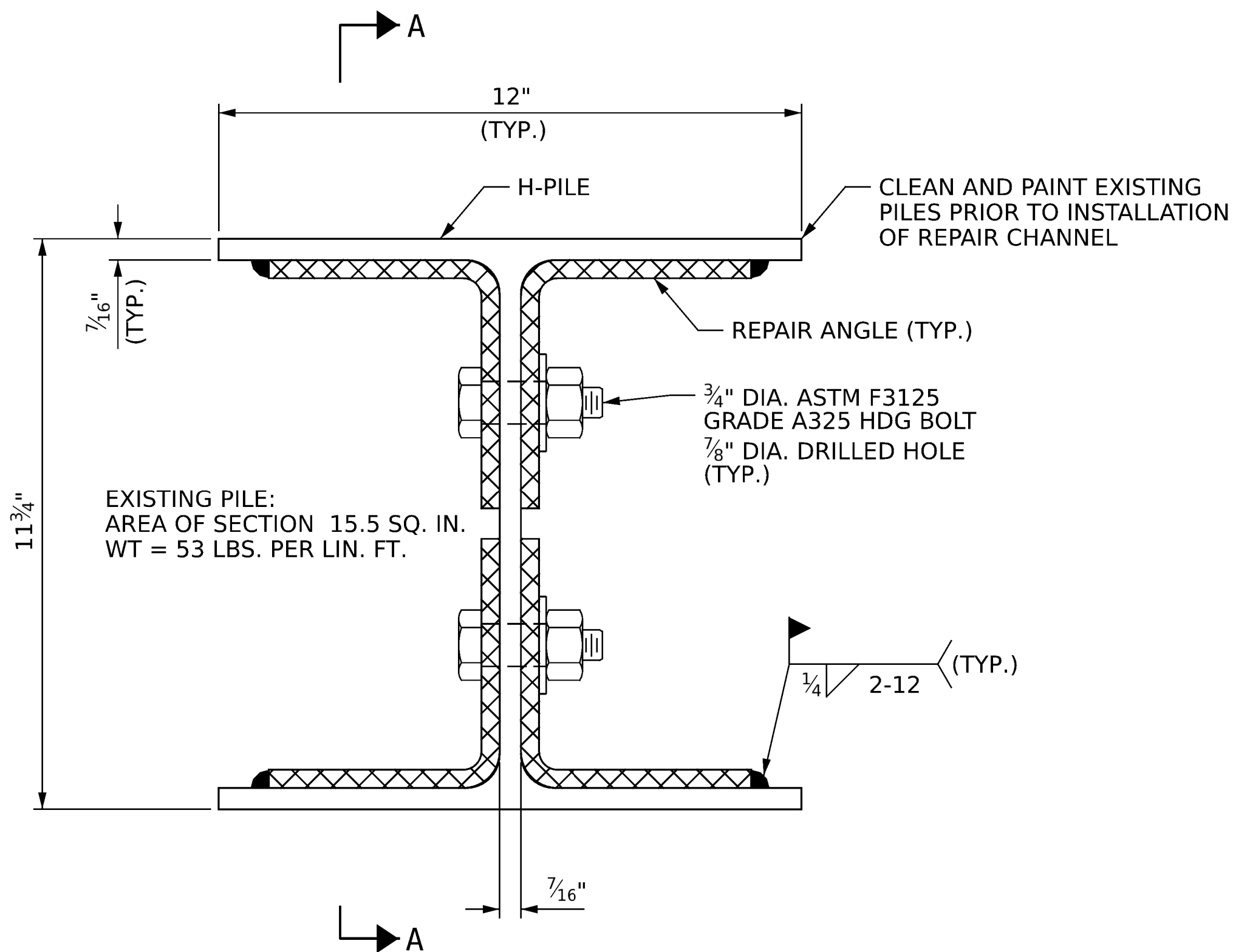
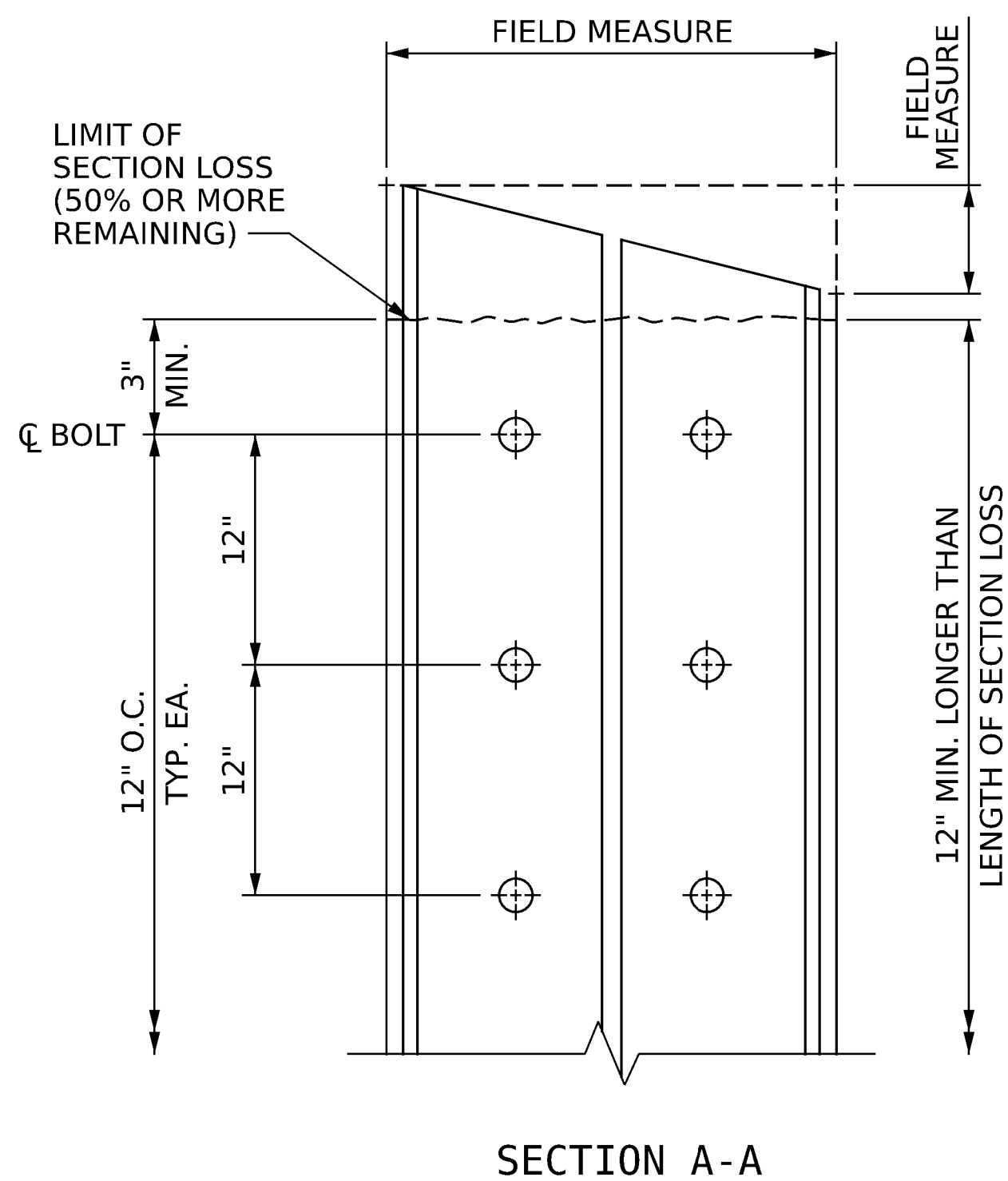


EXISTING H-PILE & REPAIR ANGLE DIMENSIONS

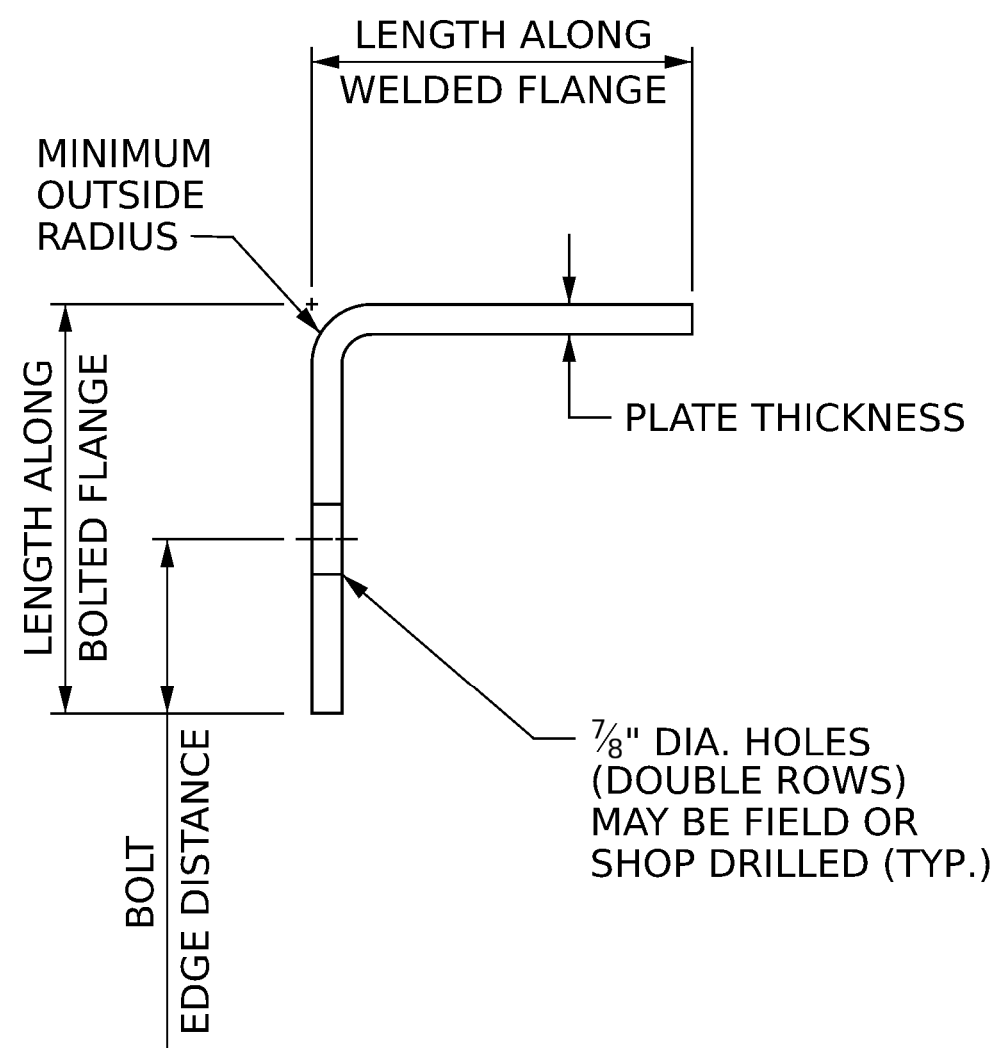
PILE SIZE	PLATE THICKNESS	MINIMUM OUTSIDE RADIUS	LENGTH ALONG WELDED FLANGE	LENGTH ALONG BOLTED FLANGE	VERTICAL BOLT SPACING	BOLT EDGE DISTANCE
HP12x53	3/8"	1"	4 3/4"	5 1/8"	1'-0"	2"



REPAIR SECTION THROUGH PILE

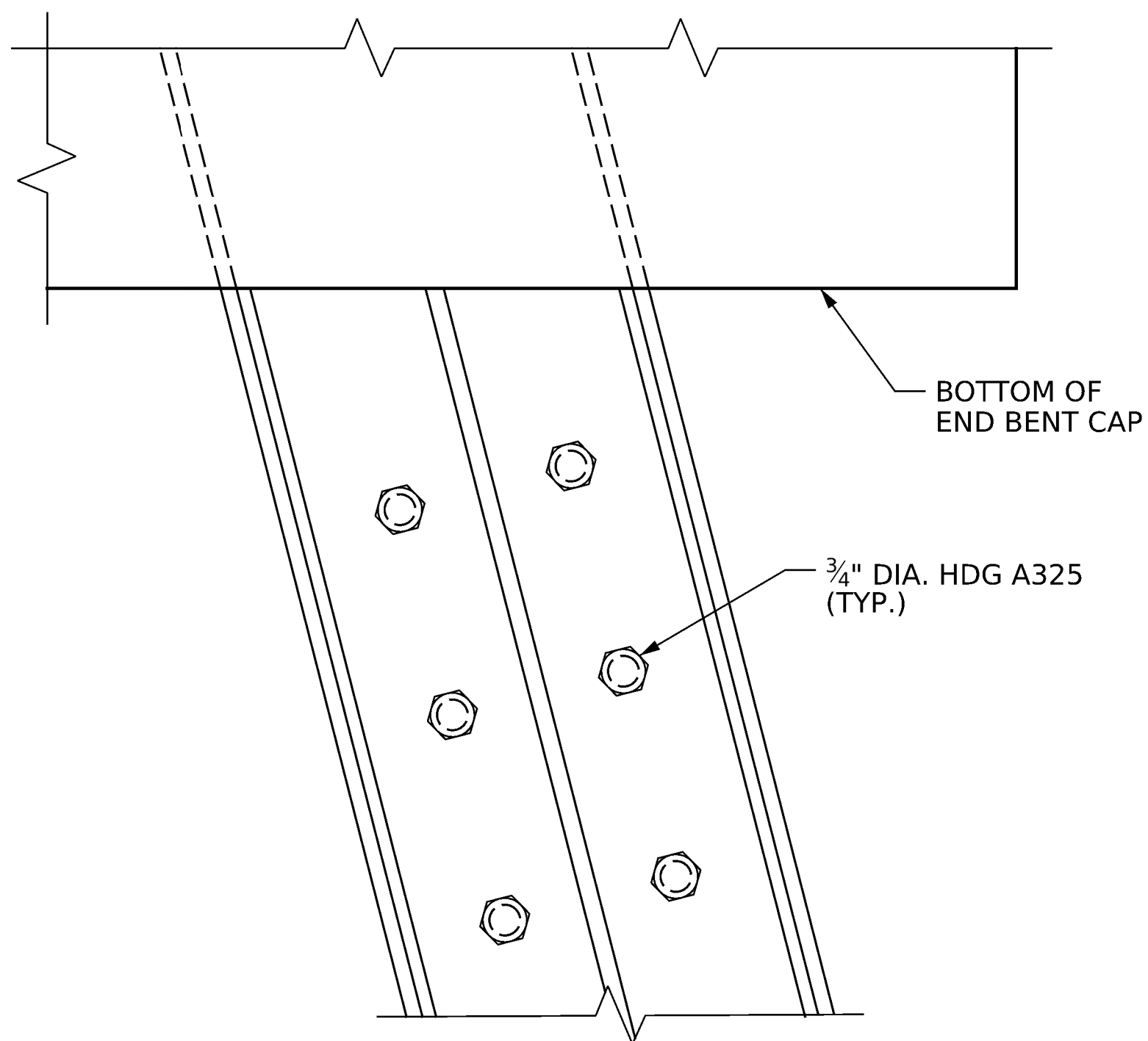


LONGITUDINAL BATTER



REPAIR ANGLE SECTION

(SEE EXISTING H-PILE & REPAIR ANGLE DIMENSIONS TABLE)



ELEVATION

NOTES:

THE CONTRACTOR SHALL FIELD VERIFY EXISTING PILE DIMENSIONS PRIOR TO THE FABRICATION OF ANY REPAIR ANGLES.

ALL STRUCTURAL STEEL PLATES SHALL BE AASHTO M270 GRADE 50.

ALL BOLTS SHALL BE ASTM A325 HOT DIPPED GALVANIZED BOLTS WITH A 3/4 INCH DIAMETER, UNLESS OTHERWISE NOTED.

ALL HOLES SHALL BE DRILLED $\frac{1}{8}$ INCH LARGER THAN THE CORRESPONDING BOLT DIAMETER.

EXPOSED PORTIONS OF THE EXISTING STEEL PILES SHALL BE HAND CLEANED IN ACCORDANCE WITH SUBARTICLE 442-7(B) OF THE STANDARD SPECIFICATIONS. AFTER CLEANING STEEL PILES, PAINT THE PILES WITH PRIMER WITHIN 8 HOURS AFTER CLEANING IS COMPLETE.

STEEL REPAIR ANGLE SECTIONS SHALL BE SHOP PRIMED OR GALVANIZED IN ACCORDANCE WITH THE STANDARD SPECIFICATIONS.

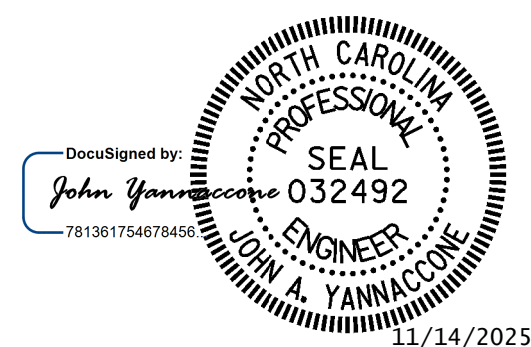
BEND PLATE FOR REPAIR ANGLE SECTION PERPENDICULAR TO THE ROLLING DIRECTION OF THE PLATE.

FOR STEEL PILE REPAIRS, SEE SPECIAL PROVISIONS.

AS-BUILT REPAIR QUANTITY TABLE

NUMBER OF REPAIR ANGLES	LENGTH OF REPAIR ANGLE	WEIGHT OF ONE REPAIR ANGLE (LBS)	STEEL PILE REPAIRS (LBS)
56	7'-0"	85	4760

PROJECT NO. **18314.1044067**
HAYWOOD COUNTY
 BRIDGE: **430163**



STATE OF NORTH CAROLINA
DEPARTMENT OF TRANSPORTATION
RALEIGH

STEEL PILE REPAIR DETAILS

DRAWN BY : J. HARRIS DATE : 4/2025
CHECKED BY : J. YANNACCONE DATE : 4/2025



One Glenwood Avenue
Suite 900
Raleigh, NC 27603
919-420-7660
NC Lic. No. F-0270

DOCUMENT NOT CONSIDERED
FINAL UNLESS ALL
SIGNATURES COMPLETED

REVISIONS						SHEET NO. S-12
NO.	BY:	DATE:	NO.	BY:	DATE:	
1			3			TOTAL SHEETS 14
2			4			